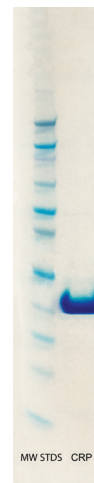


C-REACTIVE PROTEIN (CRP)

Source:	Human Fluids
Form:	Liquid
Buffer:	TRIS buffer containing Sodium Azide and NaCl at pH 7.0
Concentration:	1- 5 mg/mL
Purity:	Immunopure is $\geq 95\%$ by SDS Page, Single band at ~ 23 kDa
Assay:	Assay performed on Roche Cobas c501
Storage:	2-8°C
Molecular Weight:	115 kDa
Appearance:	Clear, colorless to faint yellow



C-Reactive Protein (CRP) is an acute-phase protein produced only in the liver. The concentration of CRP in plasma or serum increases significantly in the presence of infectious and noninfectious inflammation, tissue damage and malignant tumors. The protein is also present in the active stages of inflammatory disorders like rheumatoid arthritis, ankylosing spondylitis, Reiter's syndrome, psoriatic arthropathy, systemic lupus erythematosus, polyarteritis, ulcerative colitis and Crohn's disease. CRP is used in many parts of the world as a screening test when a patient is admitted to the ER or hospital. CRP is a pentameric serum protein with an approximate molecular weight of 115 kDa and is composed of five non-covalently linked identical subunits each with a molecular weight of 23 kDa.