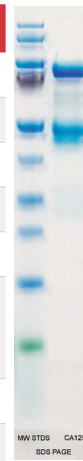


CANCER ANTIGEN 125 (CA-125)

Source:	Human
Form:	Liquid
Buffer:	PBS, 20% Sucrose, 0.1% Sodium Azide, pH 7.4
Concentration:	≥ 50,000 IU/mL, assayed on Roche Centaur
Purity:	Immunopure and Purified
Cross Reactivity:	Partially Purified: CEA, CA 15-3, CA 19-9 < 15% Purified: ≥ 70% SDS-Page Immunopure: CEA, CA 15-3, CA 19-9 < 1%
Storage:	2-8°C for short term, -20°C for long term storage
Molecular Weight:	Ranging from 200 to 2000 kDa
Appearance:	Colorless




Associated Products: Cancer Antigen 19-9 (CA 19-9): Partially Purified, Purified, and Immunopure

CA-125, also known as mucin 16 or MUC16, is a protein that in humans is encoded by MUC16 gene. MUC16 is a member of the mucin family glycoproteins. CA-125 is the most frequently used biomarker for ovarian cancer detection. Around 90% of women with advanced ovarian cancer have elevated levels of CA-125 in their blood serum, making CA-125 a useful tool for detecting ovarian cancer after the onset of symptoms. CA-125 has limited specificity for ovarian cancer because elevated CA-125 levels can be found in individuals without ovarian cancer. For example, CA-125 is best known as a marker for ovarian cancer, endometrial cancer, breast cancer and gastrointestinal cancer. CA-125 may also be elevated in a number of relatively benign conditions, such as endometriosis, several diseases of the ovary, menstruation and pregnancy.

 1.800.748.6674

 www.aaltoscientific.com

 230 Technology Parkway
Eatonton, GA 31024

 1.706.431.6942