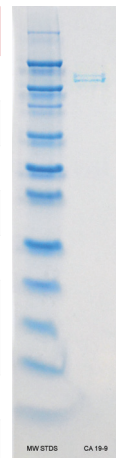


CANCER ANTIGEN 19-9 (CA19-9)

Source:	Human
Form:	Liquid
Buffer:	PBS, 20% Sucrose, 0.1% Sodium Azide, pH 7.4
Concentration:	≥ 50,000 IU/mL, assayed on Roche Centaur
Purity:	Immunopure and Purified
Cross Reactivity:	Partially purified: CEA, CA 15-3, CA 125 as measured Purified: CA 15-3, CA 125 <20%, CEA < 0.5 mg/200 KIU Immunopure: CA 15-3, CA 125 < 1%, CEA < 1.0 ng/200 KIU, CA 19-9
Storage:	2-8°C for short term, -20°C for long term storage
Molecular Weight:	~210 kDaa
Appearance:	Slightly yellowish to colorless



Associated Products: Cancer Antigen 125 (CA 125): Partially Purified, Purified and Immunopure

Cancer Antigen 19-9 is a tumor marker that is commonly used in the management of pancreatic and gastrointestinal carcinoma. CA 19-9 can be elevated in many types of gastrointestinal cancer, such as colorectal cancers, esophageal cancer and hepatocellular carcinoma. Apart from cancer, elevated levels may also occur in pancreatitis, cirrhosis, and diseases of the bile ducts. Bile duct obstruction can also cause it to be elevated (Distler December 2013).




1.800.748.6674



1.706.431.6942



www.aaltoscientific.com



230 Technology Parkway
Eatonton, GA 31024