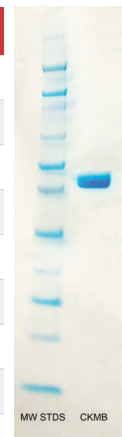


## CREATINE KINASE MB (CKMB)

Source:	Human
Form:	Liquid
Buffer:	TRIS buffer with 0.1% Sodium Azide at pH 7.0
Concentration:	≥550 IU/mL
Purity:	Immunopure is > 95% by SDS Page
Assay:	Assay performed on Roche Cobas e411 (Mass) & C501 (Unit)
Storage:	2-8°C
Molecular Weight:	81,000-84,000 kDa
Appearance:	Clear, colorless



**Associated Products:** **Creatine Kinase BB (CKBB): Partially Purified, Purified and Immunopure**  
**Creatine Kinase MM (CKMM): Partially Purified, Purified and Immunopure**  
**Myoglobin: Purified and Immunopure**

Creatine Kinase MB (CKMB) is a dimeric enzyme and an important myocardial marker primarily found in the muscle tissue of the heart. It is clinically used to confirm acute myocardial infarction (AMI) or any other diagnosis of myocardial injury in patients. CKMB levels increase when a patient has had any myocardial damage. According to the Mayo Clinic, CKMB levels can be detected within 3-8 hours of the onset of chest pain and peaks within 12-24 hours. An acceptable CKMB value for a male is < 737ng/mL. The acceptable value for a female is ≤ 413 ng/mL. CKMB was the cardiac marker of choice for AMI for years, but it was surpassed by cardiac troponins. However, CKMB is still tested alongside Troponin I and sometimes with Myoglobin for an overall view of cardiac status.